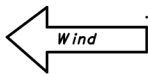
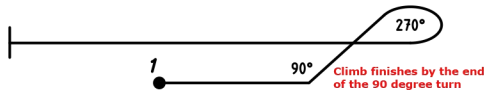


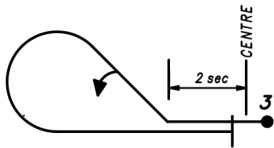
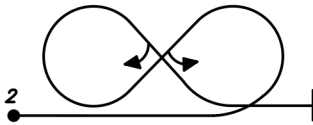
NZ Clubman Aerobatics



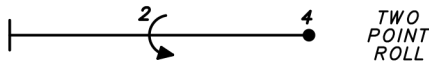
TAKE OFF



CUBAN EIGHT

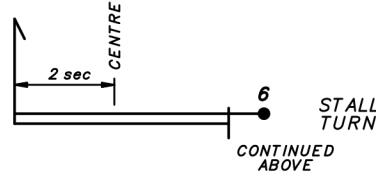
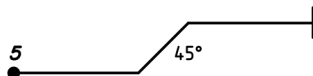


HALF REVERSE CUBAN EIGHT

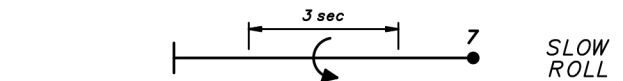


TWO POINT ROLL

45 DEGREE UPLINE

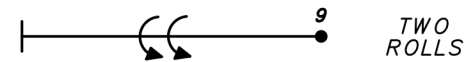
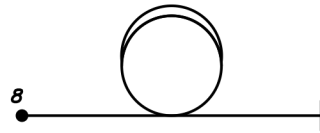


STALL TURN



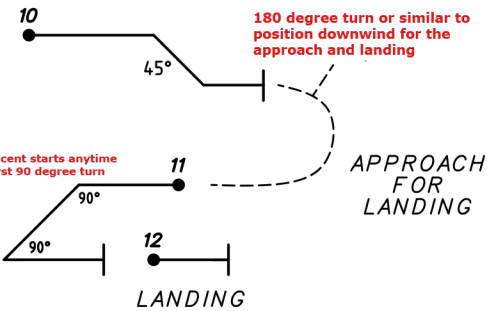
SLOW ROLL

TWO LOOPS



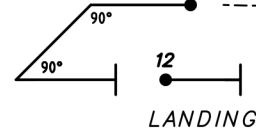
TWO ROLLS

45 DEGREE DOWNLINE



APPROACH FOR LANDING

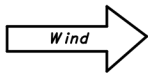
Constant descent starts anytime AFTER the first 90 degree turn



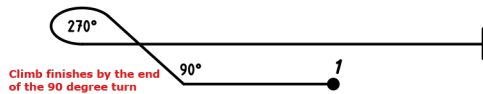
LANDING

Drawn I Hill-NZ
Rev 2 6.7.22

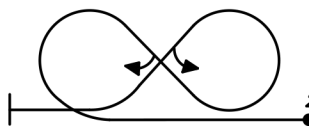
NZ Clubman Aerobatics



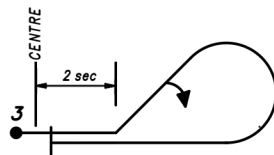
TAKE OFF



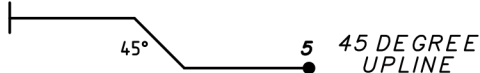
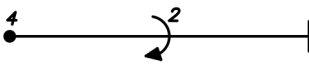
CUBAN EIGHT



HALF REVERSE CUBAN EIGHT

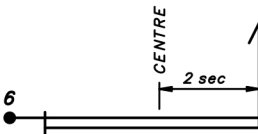


TWO POINT ROLL



45 DEGREE UPLINE

STALL TURN

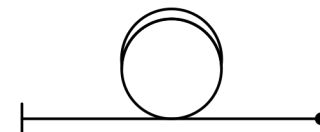


CONTINUED ABOVE

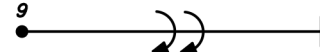
SLOW ROLL



TWO LOOPS

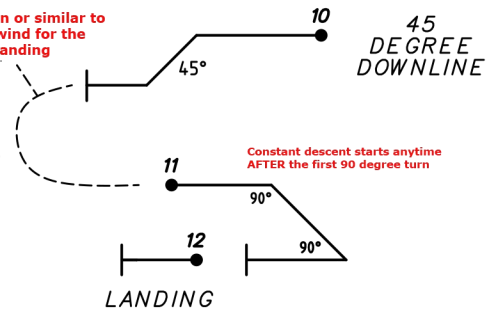


TWO ROLLS



180 degree turn or similar to position downwind for the approach and landing

APPROACH FOR LANDING



45 DEGREE DOWNLINE

Constant descent starts anytime AFTER the first 90 degree turn

LANDING

Drawn I Hill-NZ
Rev 2 6.7.22